



Ash Tree Field, Harlow, CM20

BUTLER  STAG



Well presented three double bedroom mid-terraced house situated in the heart of Harlow, just a short distance from Harlow Town Centre and Harlow Train Station, which offers links to London Liverpool Street.



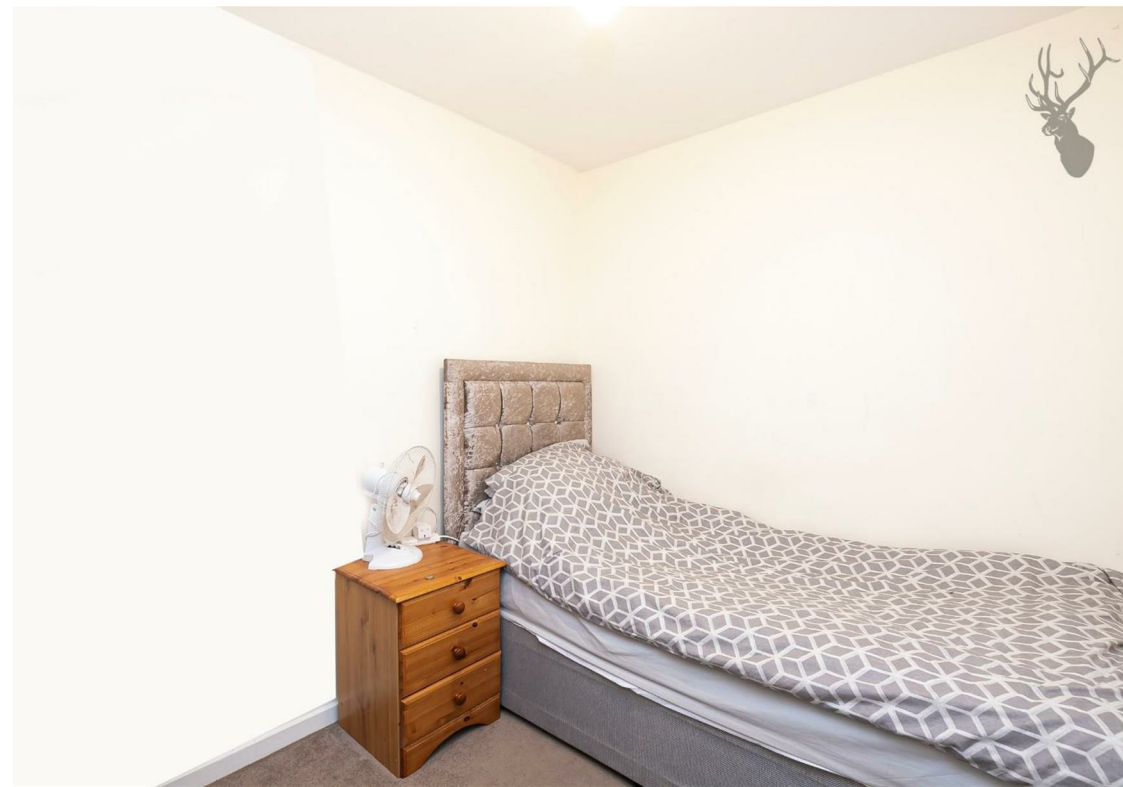
- Three Double Bedrooms
- Fully Fitted Kitchen
- Garden
- Gas Central Heating
- Unfurnished
- Available February

Internally, the property offers two reception rooms, a modern fitted kitchen with appliances, three bedrooms and a modern family bathroom.

Externally the property boasts a good size rear garden that is mainly laid to lawn with some patio area.

The property is available 8th February 2022 and is offered on an unfurnished basis.





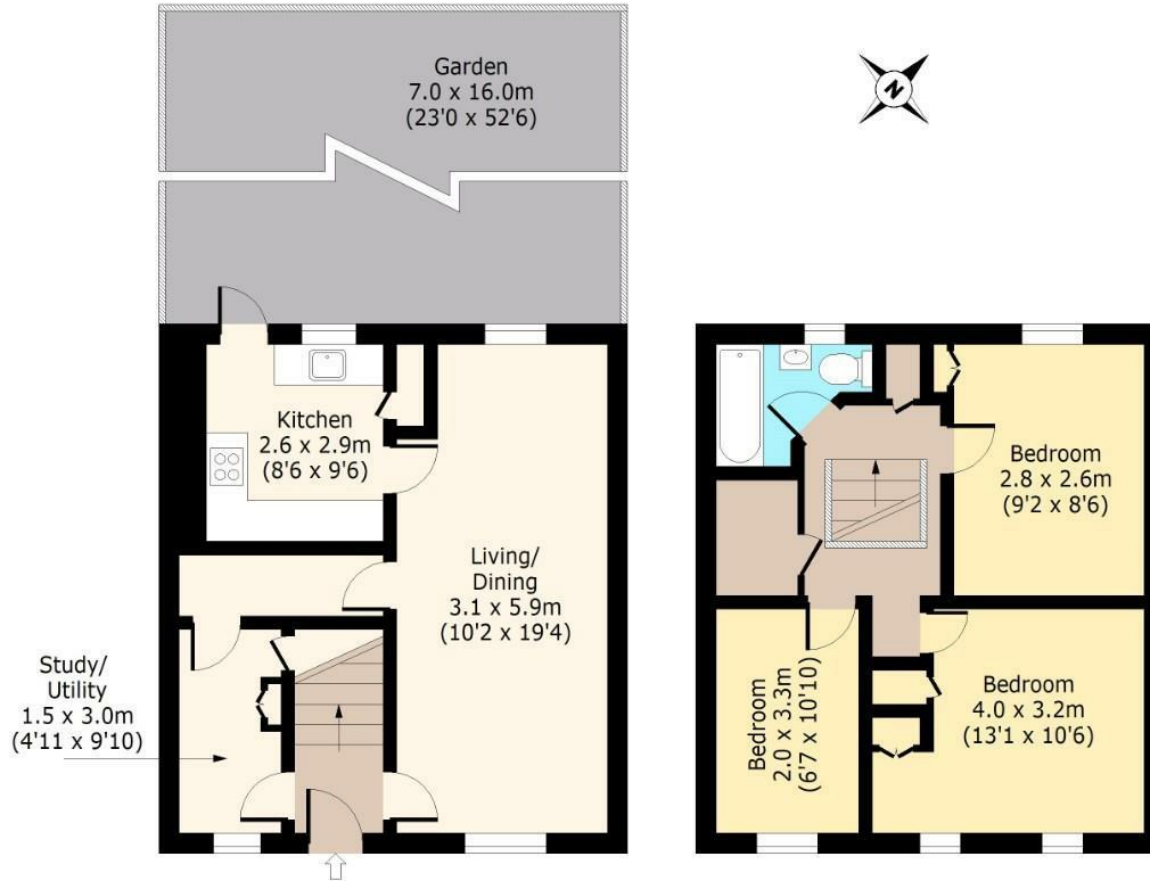
Ash Tree Fields,

Ground Floor

Approx. 44.1 Sq. meters (475 Sq. feet)

First Floor

Approx. 45.4 Sq. meters (489 Sq. feet)



Total area: approx. 89.5 Sq. meters (964 Sq. feet)

For illustration purposes only - not to scale

www.lpaplus.com

BUTLER & STAG

☎ 01992 667666

🏠 4 Forest Drive, Theydon Bois, Essex, CM16 7EY

✉ theydon@butlerandstag.com

www.butlerandstag.uk

IMPORTANT NOTICE - These particulars have been prepared in good faith and they are not intended to constitute part of an offer or contract. We have not performed a structural survey on this property and the services, appliances and specific fittings have not been tested. All photographs, measurements, floor plans and distances referred to are given as a guide and should not be relied upon.